

## PUN Index GME

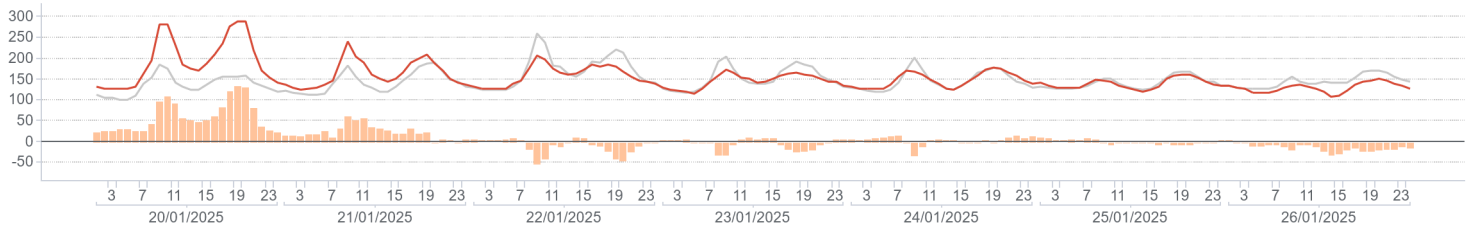
	Average (€/MWh)	Change (€/MWh)	Change (%)
<b>Baseload</b>	153,97	6,54	4,4%
<i>Peak</i>	181,07	16,27	9,9%
<i>Off-peak</i>	138,92	1,14	0,8%
<b>Hourly maximum</b>	289,00		
<b>Hourly minimum</b>	108,78		

## Volumes

	MWh	Average (MWh)	Change (%)	
<b>Total supply</b>	National	8.871.695	52.808	-3,0%
	Foreign	1.303.485	7.759	7,1%
	<b>Total</b>	<b>10.175.180</b>	<b>60.567</b>	<b>-1,8%</b>
<b>Sales</b>	National	4.737.534	28.200	-2,7%
	Foreign	1.237.070	7.364	7,0%
	<b>Total</b>	<b>5.974.604</b>	<b>35.563</b>	<b>-0,9%</b>
<b>Purchases</b>	National	5.743.893	34.190	-1,4%
	Foreign	230.712	1.373	13,3%
	<b>Total</b>	<b>5.974.604</b>	<b>35.563</b>	<b>-0,9%</b>

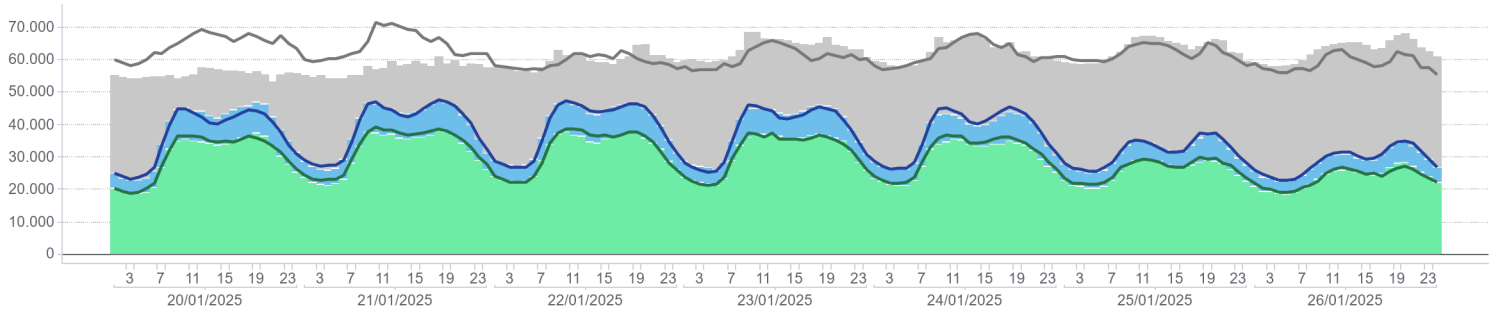
## PUN Index GME (€/MWh)

Hourly price / previous week / Price delta



## Volumes Supplied, Sold and Purchased (MWh)

Volume unsold / Off-IPEX Sales / On-IPEX Sales / On-IPEX Sales - prev. week / Off-IPEX Sales - prev. week / Volume unsold prev. week



## Electricity Supply

	MWh	Change (%)	Structure
<b>IPEX</b>	<b>4.847.238</b>	<b>-2,6%</b>	<b>81,1%</b>
<i>Market participants</i>	3.322.548	-5,4%	55,6%
<i>GSE</i>	305.494	-6,6%	5,1%
<i>Balance of PCE schedules</i>	0		0,0%
<b>PCE (including MTE)</b>	<b>1.127.366</b>	<b>7,6%</b>	<b>18,9%</b>
<i>Foreign zones</i>	618.535	7,0%	10,4%
<i>National zones</i>	1.109.492	7,5%	18,6%
<i>Balance of PCE schedules</i>	0		0,0%
<b>VOLUMES SOLD</b>	<b>5.974.604</b>	<b>-0,9%</b>	<b>100,0%</b>
<b>VOLUMES UNSOLD</b>	<b>4.200.576</b>	<b>-3,2%</b>	
<b>TOTAL SUPPLY</b>	<b>10.175.180</b>	<b>-1,8%</b>	

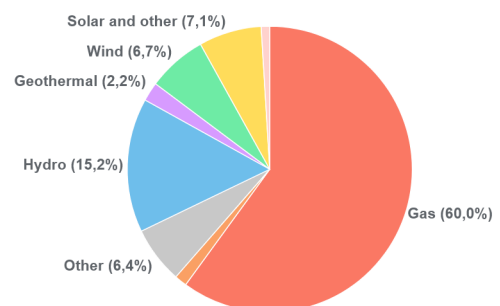
## Electricity Demand

	MWh	Change (%)	Structure
<b>IPEX</b>	<b>4.847.238</b>	<b>-2,6%</b>	<b>81,1%</b>
<i>Acquirente Unico</i>	123.387	-8,6%	2,1%
<i>Other market participants</i>	3.923.123	-3,7%	65,7%
<i>Pumped-storage plants</i>	19.941	9,3%	0,3%
<i>Foreign zones</i>	229.863	13,4%	3,8%
<i>Balance of PCE schedules</i>	550.925	0,2%	9,2%
<b>PCE (including MTE)</b>	<b>1.127.366</b>	<b>7,6%</b>	<b>18,9%</b>
<i>Acquirente Unico - National zones</i>	12.720	32,5%	0,2%
<i>Other participants - National zones</i>	1.664.721	4,9%	27,9%
<i>Balance of PCE schedules</i>	-550.925	0,2%	-9,2%
<b>VOLUMES PURCHASED</b>	<b>5.974.604</b>	<b>-0,9%</b>	<b>100,0%</b>
<b>VOLUMES UNPURCHASED</b>	<b>270.301</b>	<b>35,2%</b>	
<b>TOTAL DEMAND</b>	<b>6.244.905</b>	<b>0,3%</b>	

## Volumes Sold by Source

	Total (MWh)	Average (MWh)	Change (MWh)	Change (%)
<b>Conventional</b>	<b>3.215.757</b>	<b>19.141</b>	<b>1.070</b>	<b>5,9%</b>
<i>Gas</i>	2.844.731	16.933	1.097	6,9%
<i>Coal</i>	66.246	394	37	10,3%
<i>Other</i>	304.780	1.814	-64	-3,4%
<b>Renewable</b>	<b>1.476.121</b>	<b>8.786</b>	<b>-1.802</b>	<b>-17,0%</b>
<i>Hydro</i>	718.582	4.277	-53	-1,2%
<i>Geothermal</i>	101.935	607	-11	-1,8%
<i>Wind</i>	318.448	1.896	-1.659	-46,7%
<i>Solar and other</i>	337.156	2.007	-78	-3,8%
<b>Pumped storage</b>	<b>45.657</b>	<b>272</b>	<b>-60</b>	<b>-18,1%</b>
<b>Total</b>	<b>4.737.534</b>	<b>28.200</b>	<b>-792</b>	<b>-2,7%</b>

## Volumes Sold by Source



## Zonal selling price

	Northern IT		Central-northern IT		Central-southern IT		Southern IT		Calabria		Sicilia		Sardegna	
	€/MWh	Var	€/MWh	Var	€/MWh	Var	€/MWh	Var	€/MWh	Var	€/MWh	Var	€/MWh	Var
<b>Baseload</b>	154,29	4,4%	154,85	4,7%	154,22	4,3%	153,49	6,0%	150,16	4,1%	150,47	4,4%	152,25	3,0%
<i>Peak</i>	182,03	9,7%	183,14	10,4%	181,37	9,3%	179,33	13,8%	170,08	8,8%	170,08	8,8%	181,37	9,3%
<i>Off-peak</i>	138,87	0,8%	139,13	1,0%	139,13	1,0%	139,13	1,0%	139,09	1,2%	139,58	1,6%	136,08	-1,3%
<b>Hourly maximum</b>	289,00		289,00		289,00		289,00		289,00		289,00		289,00	
<b>Hourly minimum</b>	112,21		112,21		112,21		112,21		112,21		112,21		112,21	5,00

## Zonal volumes

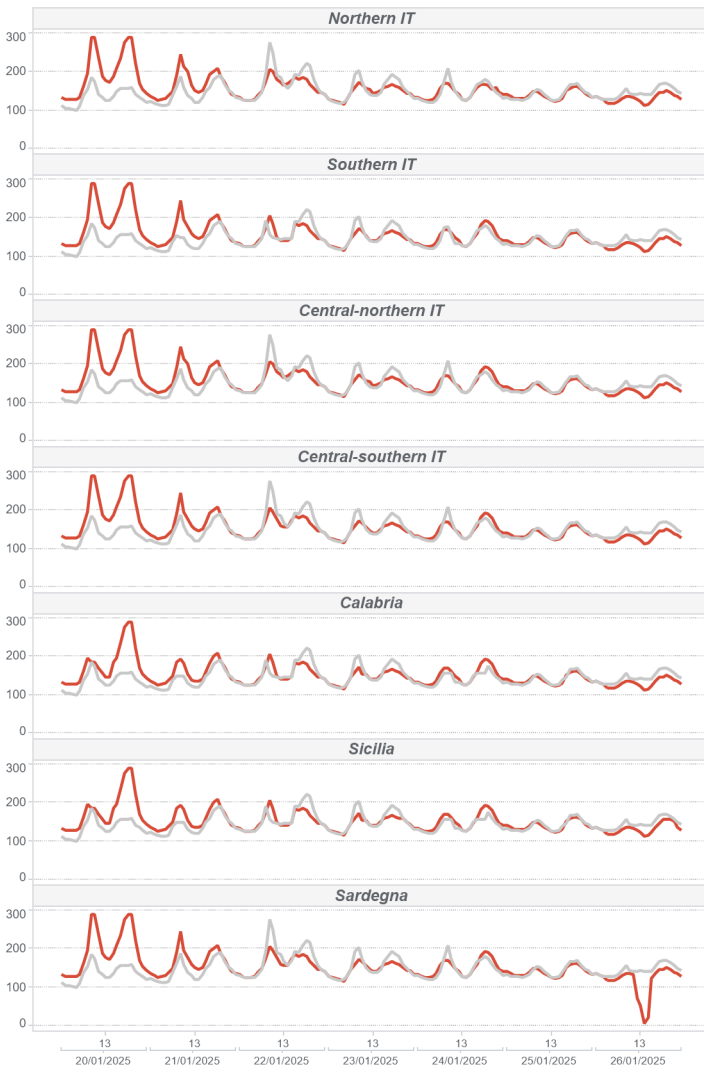
		Northern IT		Central-northern IT		Central-southern IT		Southern IT		Calabria		Sicilia		Sardegna	
		MWh	Var	MWh	Var	MWh	Var	MWh	Var	MWh	Var	MWh	Var	MWh	Var
<b>Total supply</b>	<i>Total</i>	4.627.708	-199.513	313.555	-37.922	1.442.585	59.266	1.032.078	-50.671	610.800	35.472	533.960	-80.620	311.011	-4.560
<b>Sales</b>	<i>Total</i>	2.484.225	-47.203	268.252	-37.057	663.027	54.390	547.588	-1.381	331.931	-4.018	209.121	-89.469	233.391	-8.333
<b>Purchase</b>	<i>Total</i>	3.321.281	-30.137	489.013	-6.174	1.011.591	-25.609	342.176	-1.358	109.176	-2.168	314.833	-5.519	155.824	-7.842
<b>Total supply</b>	<i>Average</i>	27.546	-4,13%	1.866	-10,79%	8.587	4,28%	6.143	-4,68%	3.636	6,17%	3.178	-13,12%	1.851	-1,45%
<b>Sales</b>	<i>Average</i>	14.787	-1,86%	1.597	-12,14%	3.947	8,94%	3.259	-0,25%	1.976	-1,20%	1.245	-29,96%	1.389	-3,45%
<b>Purchase</b>	<i>Average</i>	19.770	-0,90%	2.911	-1,25%	6.021	-2,47%	2.037	-0,40%	650	-1,95%	1.874	-1,72%	928	-4,79%

## Volumes sold by Source. Hourly Average

		Northern IT		Central-northern IT		Central-southern IT		Southern IT		Calabria		Sicilia		Sardegna	
		MWh	Var	MWh	Var	MWh	Var	MWh	Var	MWh	Var	MWh	Var	MWh	Var
<b>Conventional</b>		<b>10.657</b>	<b>1,2%</b>	<b>574</b>	<b>-22,2%</b>	<b>2.601</b>	<b>32,1%</b>	<b>2.009</b>	<b>14,2%</b>	<b>1.652</b>	<b>8,3%</b>	<b>638</b>	<b>3,8%</b>	<b>1.009</b>	<b>7,7%</b>
<i>Gas</i>		9.613	2,1%	525	-23,8%	2.343	37,0%	1.753	15,1%	1.568	9,6%	601	3,0%	530	9,3%
<i>Coal</i>		-	-	-	-	-	-	-	-	-	-	-	-	394	10,3%
<i>Other</i>		1.044	-6,2%	50	-0,5%	258	-0,4%	256	9,0%	85	-11,1%	36	18,7%	85	-10,8%
<b>Renewable</b>		<b>3.903</b>	<b>-8,5%</b>	<b>1.022</b>	<b>-5,2%</b>	<b>1.301</b>	<b>-18,6%</b>	<b>1.250</b>	<b>-17,1%</b>	<b>323</b>	<b>-31,7%</b>	<b>607</b>	<b>-47,8%</b>	<b>380</b>	<b>-24,2%</b>
<i>Hydro</i>		2.808	-5,3%	257	-4,5%	533	-3,0%	334	18,4%	120	68,4%	153	5,5%	74	54,9%
<i>Geothermal</i>		-	-	607	-1,8%	-	-	-	-	-	-	-	-	-	-
<i>Wind</i>		30	-42,3%	36	-33,5%	457	-38,3%	725	-32,7%	156	-57,3%	294	-67,2%	196	-46,5%
<i>Solar and other</i>		1.064	-14,6%	123	-10,6%	311	1,2%	191	28,6%	47	29,6%	160	31,2%	110	26,0%
<b>Pumped storage</b>		<b>227</b>	<b>-17,8%</b>	<b>-</b>	<b>-</b>	<b>44</b>	<b>-19,0%</b>	<b>0</b>	<b>-63,6%</b>	<b>-</b>	<b>-</b>	<b>-</b>	<b>-</b>	<b>0</b>	<b>-25,0%</b>
<b>Total</b>		<b>14.787</b>	<b>-1,9%</b>	<b>1.597</b>	<b>-12,1%</b>	<b>3.947</b>	<b>8,9%</b>	<b>3.259</b>	<b>-0,3%</b>	<b>1.976</b>	<b>-1,2%</b>	<b>1.245</b>	<b>-30,0%</b>	<b>1.389</b>	<b>-3,4%</b>

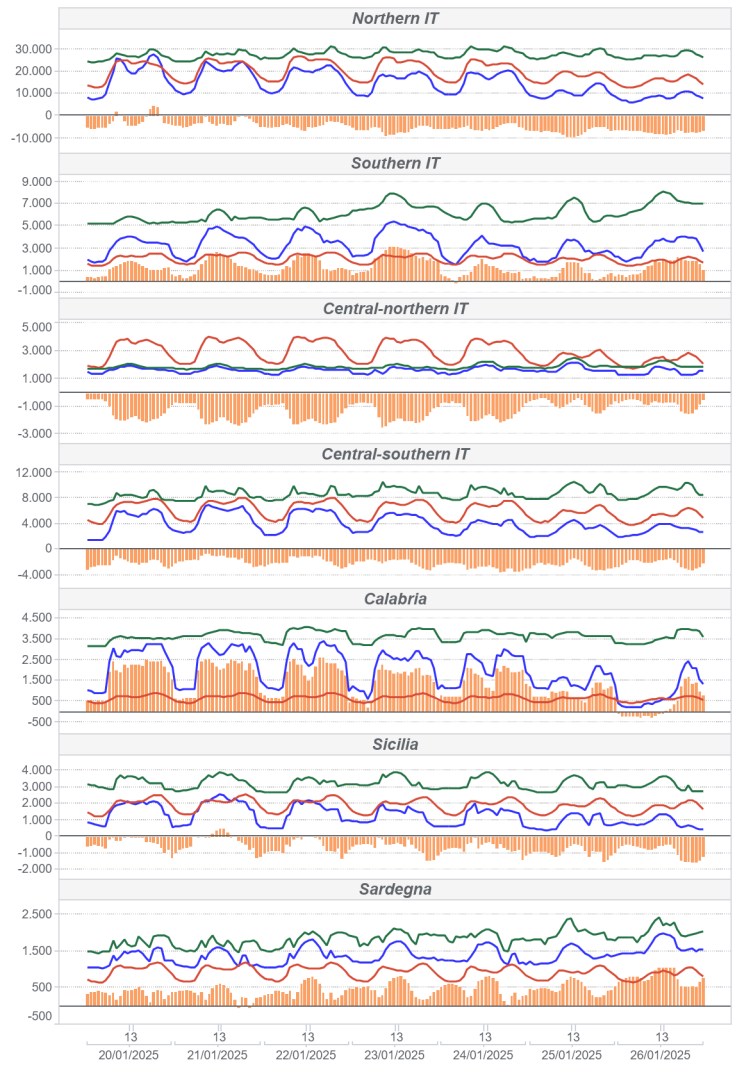
## Zonal Selling Price (€/MWh)

● Hourly price ● previous week



## Zonal Volumes (MWh)

■ Sales ■ Purchases ■ Offers ■ Flow



## Transmissions

		Direction frequency		Average Physical Transmission Rights Assigned		Average flow		Average use of Physical Transmission Rights Assigned	
		Sett. n.3	Sett. n.4	Sett. n.3	Sett. n.4	Sett. n.3	Sett. n.4	Sett. n.3	Sett. n.4
France - Northern It.	FRAN-NORD	0,0%	0,0%	0	0	0	0		
	NORD-FRAN			0	0	0	0		
	SVIZ-NORD	90,5%	93,5%	3.982	4.157	1.927	2.337	43,8%	52,5%
Switzerland - Northern It.	NORD-SVIZ	9,5%	6,5%	2.826	2.935	579	237	-1,4%	-0,4%
	AUST-NORD	0,0%	0,0%	0	0	0	0		
Austria - Northern It.	NORD-AUST			0	0	0	0		
	CSUD-MONT	39,3%	48,8%	679	633	393	437	22,8%	33,7%
Montenegro - Central Southern It.	MONT-CSUD	60,7%	51,2%	646	633	362	431	34,0%	34,8%
	SLOV-NORD	0,0%	0,0%	0	0	0	0		
Slovenia - Northern It.	NORD-SLOV			0	0	0	0		
	GREC-SUD	0,0%	0,0%	25	25	0	0	0,0%	0,0%
Greece - Southern It.	SUD-GREC			25	25	0	0	0,0%	0,0%

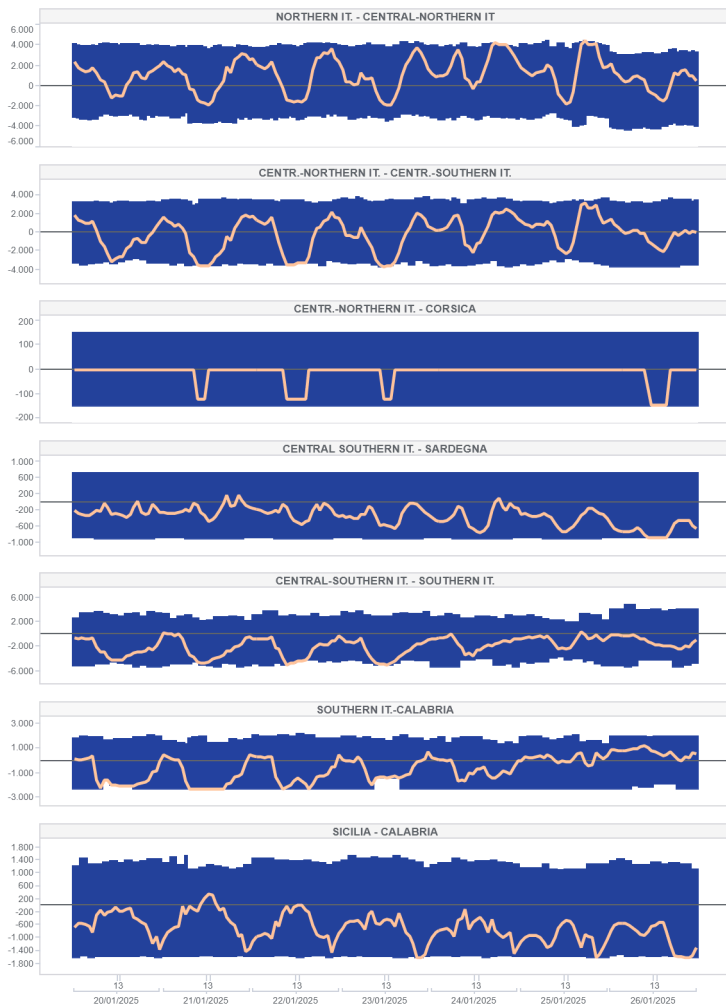
		Direction frequency		Average limit		Average flow		Saturation frequency	
		Sett. n.3	Sett. n.4	Sett. n.3	Sett. n.4	Sett. n.3	Sett. n.4	Sett. n.3	Sett. n.4
Centr.-Northern It. - Centr.-Southern It.	CNOR-CSUD	44,0%	53,0%	3.311	3.435	920	1.150	0,0%	0,0%
	CSUD-CNOR	56,0%	47,0%	3.210	3.404	1.285	1.748	0,0%	7,1%
	NORD-CNOR	73,2%	75,6%	4.009	3.923	1.412	1.790	0,0%	3,0%
Northern It. - Central-Northern It.	CNOR-NORD	26,8%	24,4%	3.124	3.262	811	1.086	0,0%	0,0%
	CNOR-CORS			150	150	0	0	1,8%	0,0%
Central-Northern It. - Corsica	CORS-CNOR	0,0%	10,7%	150	150	0	125	1,8%	0,0%
	CSUD-SARD	13,7%	3,0%	720	720	174	105	0,0%	0,0%
Centro Sud - Sardegna	SARD-CSUD	86,3%	97,0%	887	887	419	357	0,0%	3,6%
	CSUD-SUD	1,2%	1,8%	2.854	3.211	432	220	0,0%	0,0%
Centro Sud - Sud	SUD-CSUD	98,8%	98,2%	4.736	4.784	2.497	1.977	11,3%	4,8%
	CORS-SARD	0,0%	0,0%	148	150	0	0		
Corsica - Sardegna	SARD-CORS	100,0%	100,0%	148	150	30	41	0,0%	9,5%
	SUD-CALA	10,1%	40,5%	1.684	1.853	223	399	0,0%	0,0%
Southern It.-Calabria	CALA-SUD	89,9%	59,5%	2.343	2.272	1.199	1.299	5,4%	11,9%
	SICI-CALA	31,0%	4,2%	1.369	1.329	208	146	0,0%	0,0%
Sicilia - Calabria	CALA-SICI	69,0%	95,8%	1.578	1.585	501	752	1,2%	4,2%
	SICI-MALT	100,0%	98,8%	225	225	152	86	17,3%	0,0%
Sicilia - Malta	MALT-SICI	0,0%	0,0%	225	225	0	0		0,0%
	COAC-SARD	0,0%	0,0%	23	23	0	0		
Sardegna - Corsica AC	SARD-COAC	100,0%	100,0%	109	109	97	77	0,0%	0,0%

		Direction frequency		Average limit		Average flow		Saturation frequency	
		Sett. n.3	Sett. n.4	Sett. n.3	Sett. n.4	Sett. n.3	Sett. n.4	Sett. n.3	Sett. n.4
Southern It.-Grecia Coupling	SUD-XGRE	33,9%	40,5%	500	500	346	406	16,7%	26,8%
	XGRE-SUD	66,1%	59,5%	500	500	456	449	55,4%	49,4%
	NORD-COUP		5,4%	10.000	10.000	0	1.253	0,0%	0,0%
IT Coupling - Northern It.	COUP-NORD	100,0%	94,6%	10.000	10.000	4.009	4.193	0,0%	0,0%
	COUP-XAUS	20,8%	28,8%	135	142	118	134	19,6%	27,4%
Coupling - Austria Coupling	XAUS-COUP	72,0%	68,5%	330	346	315	353	64,9%	61,3%
	COUP-XFRA		3,0%	2.159	2.117	0	1.103	0,0%	1,2%
Coupling - France Coupling	XFRA-COUP	100,0%	95,8%	3.950	4.064	3.619	3.837	72,0%	79,2%
	COUP-BSP	28,6%	41,7%	679	716	542	661	17,9%	31,5%
Coupling - Slovenia Coupling	BSP-COUP	62,5%	55,4%	597	542	547	595	51,2%	48,8%

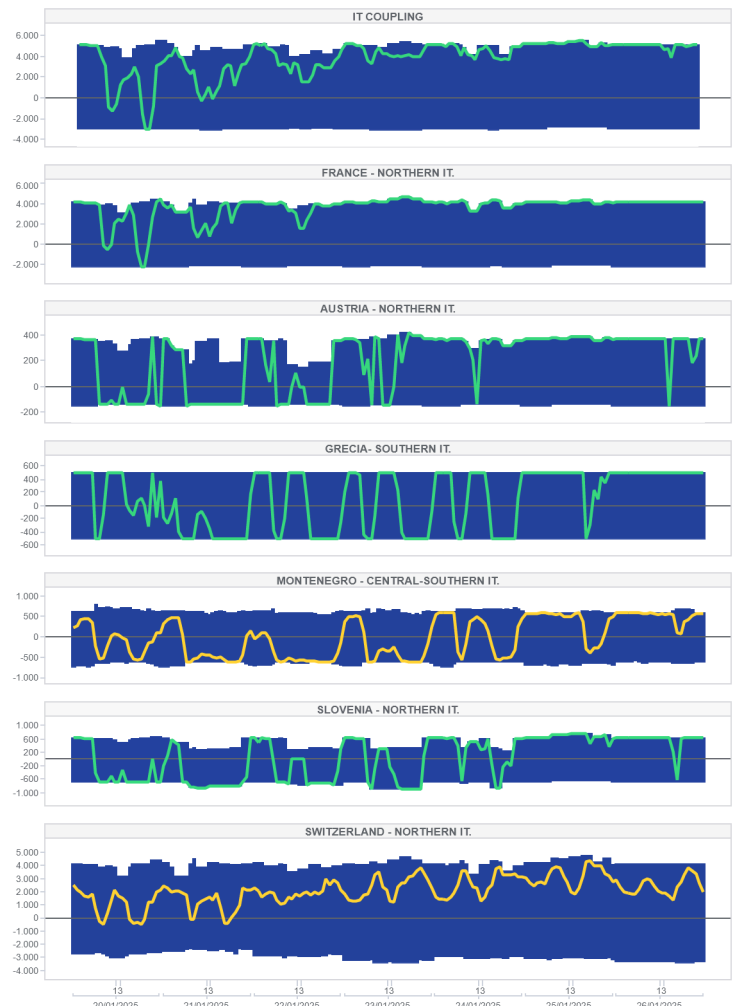
## National transmissions (MWh)

Limite Import Limite Export Flusso



## Foreign transmissions (MWh)

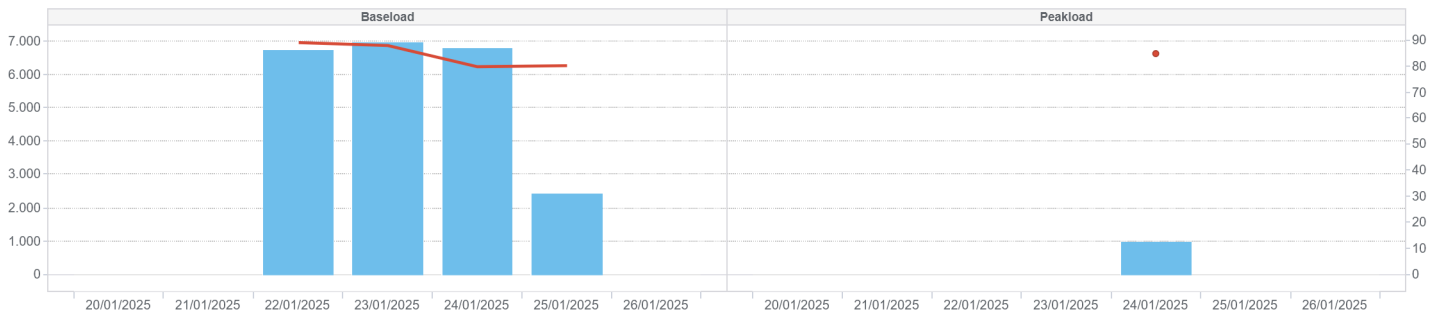
Import netto coup Import netto esplicita Limite Export Limite Import



## MPEG

Prodotti	Minimum price (cent. €/MWh)	Maximum price (cent. €/MWh)	Average price (cent. €/MWh)	Volumes (MW)	Volumes (MWh)	Open position (MW)	Open position (MWh)
20/01/2025							
21/01/2025							
<b>Baseload</b>							
22/01/2025	85,00	90,00	89,10	280	6.720	280	6.720
23/01/2025	85,00	90,00	87,75	290	6.960	290	6.960
24/01/2025	80,00	85,00	80,03	282	6.768	282	6.768
25/01/2025	80,00	100,00	80,19	101	2.424	101	2.424
26/01/2025							
20/01/2025							
21/01/2025							
<b>Peakload</b>							
22/01/2025							
23/01/2025							
24/01/2025	85,00	85,00	85,00	80	960	80	960
<b>TOTALE</b>				<b>1.033</b>	<b>23.832</b>		

Bar chart showing Volumes (MW) and Average price (€/MWh) for Baseload and Peakload.



## MTE

	Minimum price (€/MWh)	Maximum price (€/MWh)	Control price (€/MWh)	Control price (change)	Negoiazioni	Volumes (MW)	Volumes (MWh)	Volumes (MWh)	Volumes (change)	Open position (MW)	Open position (MWh)
<b>Baseload</b>											
BL-M-2025-02			144,75	14,6%						12	8.064
BL-M-2025-03			142,65	12,8%						12	8.916
BL-M-2025-04			125,73	0,0%						0	0
BL-Q-2025-02			131,17	12,0%						6	13.104
BL-Q-2025-03			142,89	13,9%						6	13.248
BL-Q-2025-04			126,58	0,0%						6	13.254
BL-Q-2026-01			119,15	0,0%						0	0
BL-Y-2026			109,89	0,0%						0	0
<b>Peakload</b>											
PL-M-2025-02			160,38	14,5%						0	0
PL-M-2025-03			155,13	14,0%						0	0
PL-M-2025-04			135,50	0,0%						0	0
PL-Q-2025-02			131,38	11,9%						0	0
PL-Q-2025-03			147,46	10,4%						0	0
PL-Q-2025-04			146,49	13,8%						0	0
PL-Q-2026-01			140,68	12,1%						0	0
PL-Y-2026			115,71	0,0%						0	0

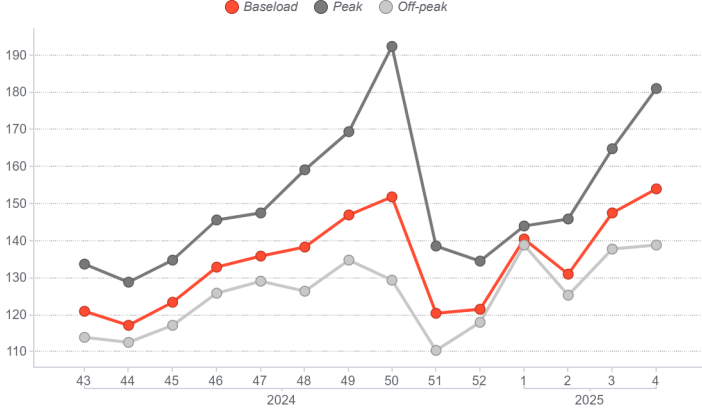
## PCE

	Registered transaction (MWh)	% change	Structure
<b>Baseload</b>	489.247	12,6%	12,0%
<b>Peak</b>	2.370	-43,2%	0,1%
<b>Off Peak</b>	1.080	0,0%	0,0%
<b>Non Standard</b>	3.559.863	-0,5%	87,3%
<b>Bilateral</b>	4.052.560	0,9%	99,4%
<b>MTE</b>	2.520	0,0%	0,1%
<b>MPEG</b>	23.832	-0,7%	0,6%
<b>Total PCE</b>	4.078.912	0,8%	100,0%
<b>Net position</b>	2.568.336	0,9%	63,0%

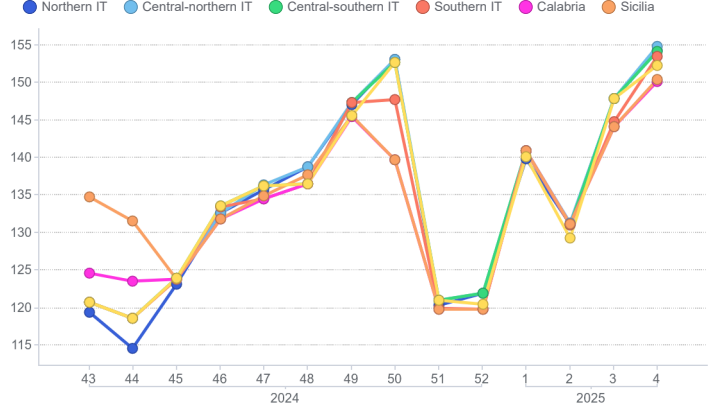
## Programs

Schedules	Injection (MWh)	Injection (change)	Withdrawal (MWh)	Withdrawal (change)
Requested	1.419.006	6,2%	1.678.305	4,9%
Rejected	291.639	1,2%	13	-99,1%
<b>Registered</b>	<b>1.127.366</b>	<b>7,6%</b>	<b>1.678.291</b>	<b>5,0%</b>
Scheduled deviation	1.440.969	-3,7%	890.045	-5,9%
<b>Balance of schedules</b>	<b>0</b>		<b>550.925</b>	

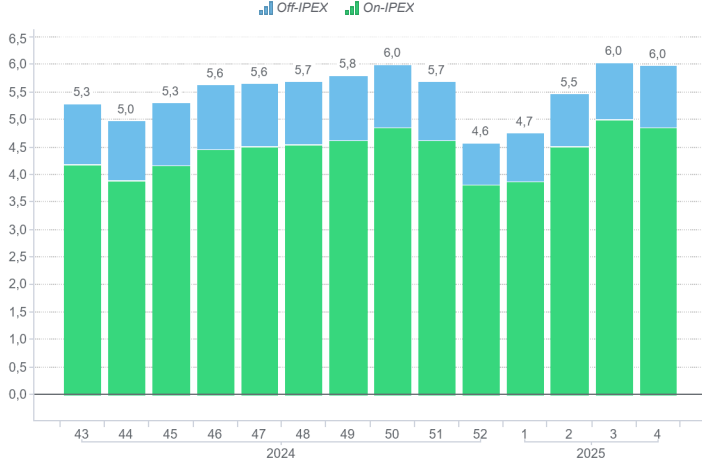
### MGP - PUN Index GME (€/MWh)



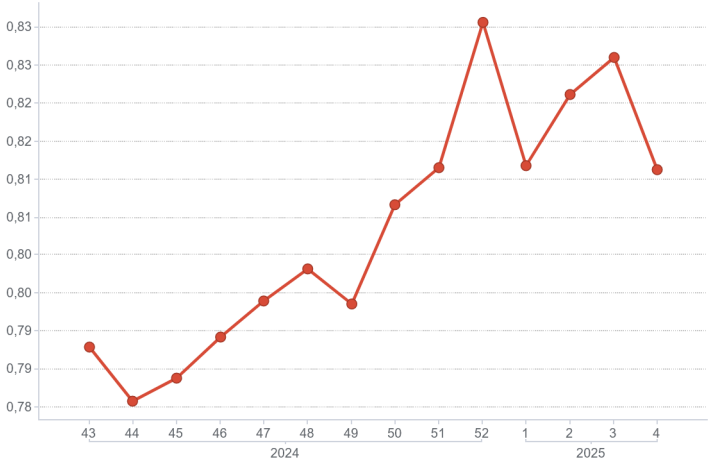
### MGP - Selling Price (€/MWh)



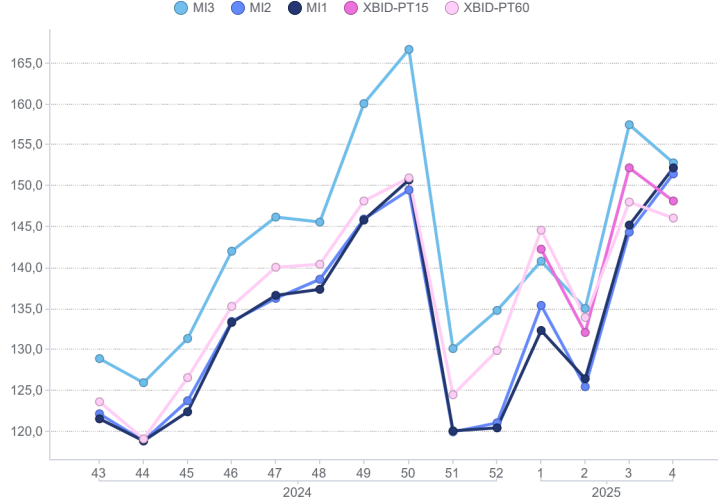
### MGP - Volumes (TWh)



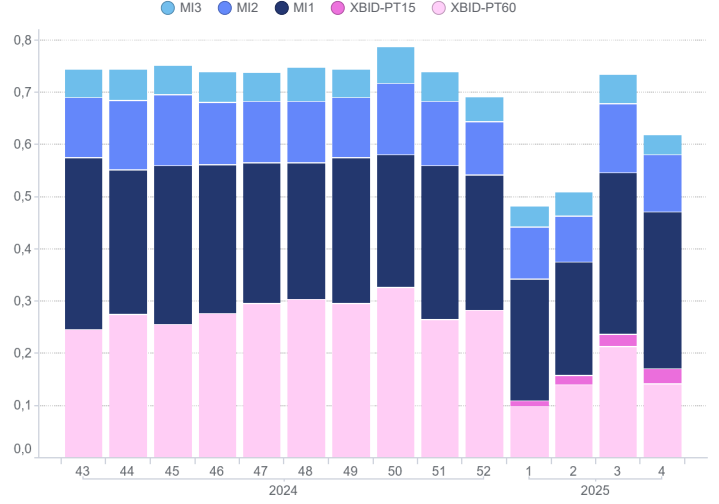
### MGP - Liquidity (%)



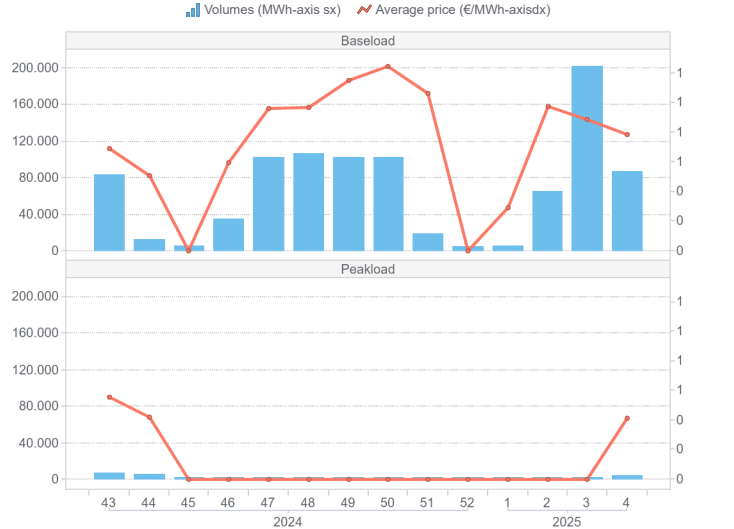
### Intra-Day Market (MI) - Prices (€/MWh)



### MI - Volumes (TWh)



### MPEG



### PCE

